

# HIMACHAL NATURE & WILDLIFE TOUR



**7 DAYS/  
6 NIGHTS**

## Our Travel Package

Shimla – Shimla – Narkanda-Sangla – Chitkul  
– Kalpa-Tirthan Valley – Great Himalayan  
National Park-Shimla

**NEGOTIABLE !!!**



### Couple

- Pickup & Drop
- 3 Star Hotels
- Braekfast & Dinner
- Slightseeing

Rs.85,000/-

### Family of 4

- Pickup & Drop
- 3 Star Hotels
- Braekfast & Dinner
- Slightseeing

Rs.1,10,000/-

### Family of 6

- Pickup & Drop
- 3 Star Hotels
- Braekfast & Dinner
- Slightseeing

Rs.1,70,000/-

### Group of 27

- Pickup & Drop
- 3 Star Hotels
- Deshpande's Kitchen
- Slightseeing
- Tour Manager

On Call



**CLICK HERE**



### Day 1: Arrival in Shimla

Check-in at hotel

Visit Mall Road, Christ Church, The Ridge

Overnight in Shimla



### Day 2: Shimla – Narkanda

Drive to Narkanda

Visit Hatu Peak, Tanni Jubbar Lake

Overnight in Narkanda

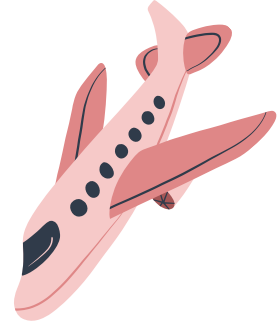


### Day 3: Narkanda – Sangla

Drive to Sangla

Visit Sangla Valley, Kamru Fort

Overnight in Sangla



### Day 4: Sangla – Chitkul – Kalpa

Drive to Chitkul, explore the last village on the Indo-Tibetan border

Drive to Kalpa, visit Kalpa Monastery, Roghi Village

Overnight in Kalpa

### Day 5: Kalpa – Tirthan Valley

Drive to Tirthan Valley

Check-in at riverside camp

Explore the valley, nature walk

Overnight in Tirthan Valley

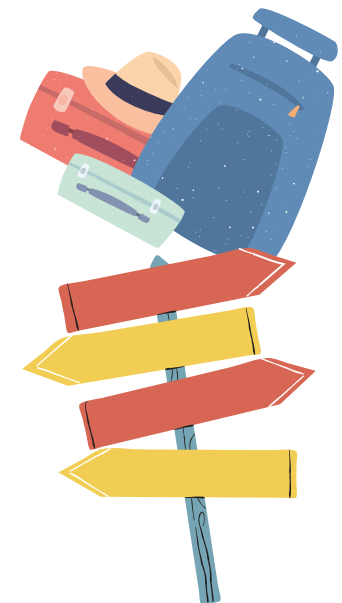


### Day 6: Tirthan Valley – Great Himalayan National Park

Visit Great Himalayan National Park

Trekking, bird watching

Return to camp, overnight stay



### Day 7: Tirthan Valley – Shimla – Departure

Drive back to Shimla

Departure from Shimla





# Tour Exclusions:

## 1. Airfare and Train Tickets:

- Cost of flights or train tickets to and from the starting and ending points of the tour.

## 2. Meals Not Specified:

- Meals other than those specified in the itinerary.
- Snacks, drinks, and beverages outside of the provided meal plan.

## 3. Seasonal Activity Restrictions:

- Activities not available during the specific season of travel, such as:
  - **Monsoon Season:** River rafting, trekking in certain regions, or other outdoor activities may be restricted due to weather conditions.
  - **Winter Season:** Access to certain high-altitude locations or activities like boat rides in frozen lakes.
  - **Summer Season:** Desert safaris or activities in extremely hot regions may be limited.

## 4. Entrance Fees and Optional Activities:

- Entrance fees to monuments, museums, and other attractions unless specifically mentioned.
- Charges for optional activities not included in the main itinerary.

## 5. Personal Expenses:

- Personal expenses such as laundry, telephone calls, and tips.
- Purchases of souvenirs, gifts, and personal shopping.

## 6. Travel Insurance:

- Travel insurance coverage for any unforeseen circumstances, medical emergencies, or trip cancellations.

## 7. Visa and Passport Fees:

- Costs related to obtaining visas, passports, or other travel documentation.

## 8. Transportation Outside the Itinerary:

- Any transportation costs not explicitly mentioned in the itinerary, such as additional taxis, rental cars, or public transport.

## 9. Medical and Health Expenses:

- Any medical or health-related expenses incurred during the trip.

## 10. Accommodation Before and After the Tour:

- Accommodation costs before the official start date of the tour and after the end date.

## 11. Special Permits:

- Costs associated with obtaining special permits for restricted areas or activities.

## 12. Gratuities:

- Tips for guides, drivers, hotel staff, and other service providers.

