

# HIMACHAL SPIRITUAL TOUR



**6 DAYS/  
5 NIGHTS**



## Our Travel Package

Dharamshala – McLeod Ganj – Bir Billing –  
Manikaran – Kasol – Kullu – Manali

**NEGOTIABLE !!!**

### Couple

- Pickup & Drop
- 3 Star Hotels
- Braekfast & Dinner
- Slightseeing

Rs.75,000/-

### Family of 4

- Pickup & Drop
- 3 Star Hotels
- Braekfast & Dinner
- Slightseeing

Rs.1,00,000/-

### Family of 6

- Pickup & Drop
- 3 Star Hotels
- Braekfast & Dinner
- Slightseeing

Rs.1,60,000/-

### Group of 27

- Pickup & Drop
- 3 Star Hotels
- Deshpande's Kitchen
- Slightseeing
- Tour Manager

On Call



WhatsApp

**CLICK HERE**



### **Day 1: Arrival in Dharamshala**

**Check-in at hotel**

**Visit Dalai Lama Temple, Bhagsu Waterfall, St. John in the Wilderness Church**

**Overnight in Dharamshala**



### **Day 2:\* Dharamshala – McLeod Ganj**

**Visit Namgyal Monastery, Norbulingka Institute**

**Explore McLeod Ganj market**

**Overnight in Dharamshala**



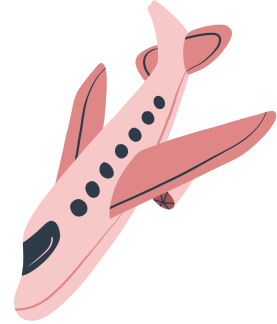
### **Day 3:\* Dharamshala – Bir Billing**

**Drive to Bir Billing**

**Visit Bir Monastery, Sherab Ling Monastery**

**Paragliding at Billing (optional)**

**Overnight in Bir**



### **Day 4:\* Bir Billing – Manikaran – Kasol**

**Drive to Manikaran**

**Visit Manikaran Sahib, hot springs**

**Drive to Kasol, check-in at hotel**

**Overnight in Kasol**

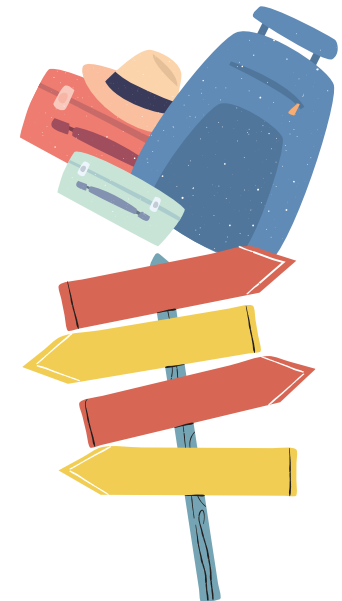
### **Day 5:\* Kasol – Kullu – Manali**

**Drive to Manali via Kullu**

**Visit Kullu Shawl Factory, Raghunath Temple**

**Check-in at hotel in Manali**

**Overnight in Manali**



### **Day 6:\* Manali – Departure**

**Visit Hadimba Temple, Manu Temple, Vashisht Hot Water Springs**





# Tour Exclusions:

## 1. Airfare and Train Tickets:

- Cost of flights or train tickets to and from the starting and ending points of the tour.

## 2. Meals Not Specified:

- Meals other than those specified in the itinerary.
- Snacks, drinks, and beverages outside of the provided meal plan.

## 3. Seasonal Activity Restrictions:

- Activities not available during the specific season of travel, such as:
  - **Monsoon Season:** River rafting, trekking in certain regions, or other outdoor activities may be restricted due to weather conditions.
  - **Winter Season:** Access to certain high-altitude locations or activities like boat rides in frozen lakes.
  - **Summer Season:** Desert safaris or activities in extremely hot regions may be limited.

## 4. Entrance Fees and Optional Activities:

- Entrance fees to monuments, museums, and other attractions unless specifically mentioned.
- Charges for optional activities not included in the main itinerary.

## 5. Personal Expenses:

- Personal expenses such as laundry, telephone calls, and tips.
- Purchases of souvenirs, gifts, and personal shopping.

## 6. Travel Insurance:

- Travel insurance coverage for any unforeseen circumstances, medical emergencies, or trip cancellations.

## 7. Visa and Passport Fees:

- Costs related to obtaining visas, passports, or other travel documentation.

## 8. Transportation Outside the Itinerary:

- Any transportation costs not explicitly mentioned in the itinerary, such as additional taxis, rental cars, or public transport.

## 9. Medical and Health Expenses:

- Any medical or health-related expenses incurred during the trip.

## 10. Accommodation Before and After the Tour:

- Accommodation costs before the official start date of the tour and after the end date.

## 11. Special Permits:

- Costs associated with obtaining special permits for restricted areas or activities.

## 12. Gratuities:

- Tips for guides, drivers, hotel staff, and other service providers.

