

# HIMACHAL HILL STATIONS TOUR



**8 DAYS/  
7NIGHTS**



## Our Travel Package

Shimla –Kufri-Shimla – Manali-Solang Valley  
-Manali-Dharamshala-Dalhousie – Khajjiar

**NEGOTIABLE !!!**

### Couple

- Pickup & Drop
- 3 Star Hotels
- Braekfast & Dinner
- Slightseeing

Rs.95,000/-

### Family of 4

- Pickup & Drop
- 3 Star Hotels
- Braekfast & Dinner
- Slightseeing

Rs.1,20,000/-

### Family of 6

- Pickup & Drop
- 3 Star Hotels
- Braekfast & Dinner
- Slightseeing

Rs.1,80,000/-

### Group of 27

- Pickup & Drop
- 3 Star Hotels
- Deshpande's Kitchen
- Slightseeing
- Tour Manager

**On Call**



**CLICK HERE**



### Day 1:\* Arrival in Shimla

Check-in at hotel

Visit Mall Road, Christ Church, The Ridge

Overnight in Shimla



### Day 2:\* Shimla – Kufri

Excursion to Kufri

Visit Kufri Fun World, Himalayan Nature Park

Return to Shimla, overnight stay



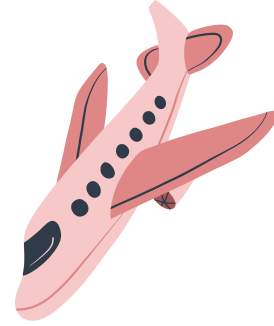
### Day 3:\* Shimla – Manali

Drive to Manali

Check-in at hotel

Evening at leisure

Overnight in Manali



### Day 4:\* Manali

Visit Hadimba Temple, Manu Temple, Vashisht Hot Water Springs

Explore Mall Road

Overnight in Manali

### Day 5:\* Manali – Solang Valley

Excursion to Solang Valley

Optional activities: Paragliding, Zorbing, Ropeway ride

Return to Manali, overnight stay



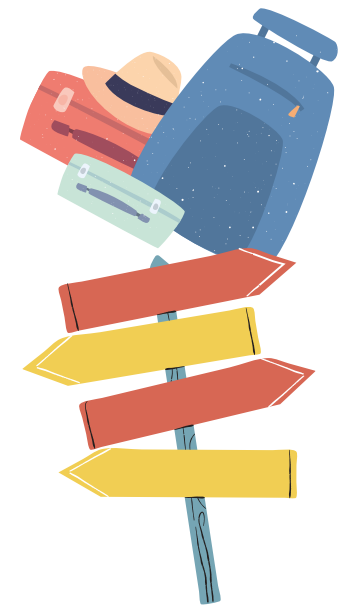
### Day 6:\* Manali – Dharamshala

Drive to Dharamshala

Check-in at hotel

Visit Dalai Lama Temple, Bhagsu Waterfall

Overnight in Dharamshala



### Day 7:\* Dharamshala – Dalhousie

Drive to Dalhousie

Check-in at hotel

Visit St. John's Church, Panchpula

Overnight in Dalhousie

### Day 8:\* Dalhousie – Khajjiar – Departure

Excursion to Khajjiar (Mini Switzerland of India)





# Tour Exclusions:

## 1. Airfare and Train Tickets:

- Cost of flights or train tickets to and from the starting and ending points of the tour.

## 2. Meals Not Specified:

- Meals other than those specified in the itinerary.
- Snacks, drinks, and beverages outside of the provided meal plan.

## 3. Seasonal Activity Restrictions:

- Activities not available during the specific season of travel, such as:
  - **Monsoon Season:** River rafting, trekking in certain regions, or other outdoor activities may be restricted due to weather conditions.
  - **Winter Season:** Access to certain high-altitude locations or activities like boat rides in frozen lakes.
  - **Summer Season:** Desert safaris or activities in extremely hot regions may be limited.

## 4. Entrance Fees and Optional Activities:

- Entrance fees to monuments, museums, and other attractions unless specifically mentioned.
- Charges for optional activities not included in the main itinerary.

## 5. Personal Expenses:

- Personal expenses such as laundry, telephone calls, and tips.
- Purchases of souvenirs, gifts, and personal shopping.

## 6. Travel Insurance:

- Travel insurance coverage for any unforeseen circumstances, medical emergencies, or trip cancellations.

## 7. Visa and Passport Fees:

- Costs related to obtaining visas, passports, or other travel documentation.

## 8. Transportation Outside the Itinerary:

- Any transportation costs not explicitly mentioned in the itinerary, such as additional taxis, rental cars, or public transport.

## 9. Medical and Health Expenses:

- Any medical or health-related expenses incurred during the trip.

## 10. Accommodation Before and After the Tour:

- Accommodation costs before the official start date of the tour and after the end date.

## 11. Special Permits:

- Costs associated with obtaining special permits for restricted areas or activities.

## 12. Gratuities:

- Tips for guides, drivers, hotel staff, and other service providers.

