

TELANGANA NATURE & ADVENTURE TOUR

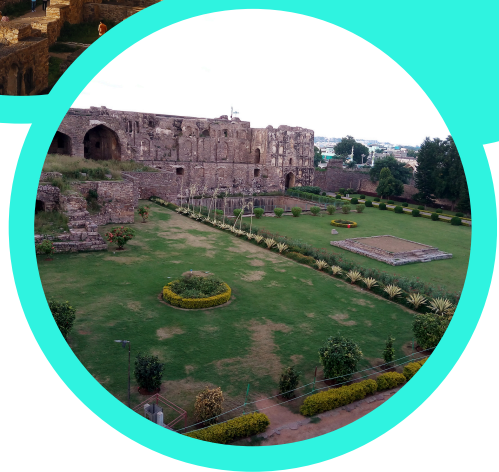


**7 DAYS/
6 NIGHTS**

Our Travel Package

Hyderabad-Kuntala Waterfalls-Adilabad-
Kawal Wildlife Sanctuary-kawal-Kinnerasani
Wildlife Sanctuary-Kinnerasani Wildlife
Sanctuary-Hyderabad

NEGOTIABLE !!!



Couple

- Pickup & Drop
- 3 Star Hotels
- Braekfast & Dinner
- Slightseeing

Rs.90,000/-

Family of 4

- Pickup & Drop
- 3 Star Hotels
- Braekfast & Dinner
- Slightseeing

Rs.1,65,000/-

Family of 6

- Pickup & Drop
- 3 Star Hotels
- Braekfast & Dinner
- Slightseeing

Rs.2,10,000/-

Group of 27

- Pickup & Drop
- 3 Star Hotels
- Deshpande's Kitchen
- Slightseeing
- Tour Manager

On Call



CLICK HERE



Day 1: Arrival in Hyderabad

Check-in at hotel

Visit Nehru Zoological Park, Lumbini Park

Overnight in Hyderabad

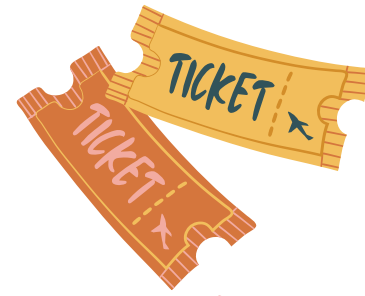


Day 2: Hyderabad – Kuntala Waterfalls

Drive to Kuntala Waterfalls

Trek to the waterfalls

Overnight camping near the waterfalls



Day 3: Kuntala Waterfalls – Adilabad – Kawal Wildlife Sanctuary

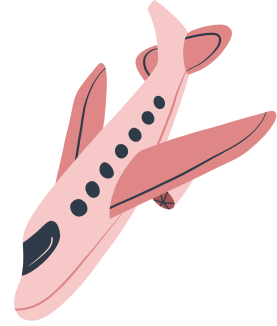
Drive to Adilabad

Visit local attractions

Continue to Kawal Wildlife Sanctuary

Evening safari

Overnight in Kawal

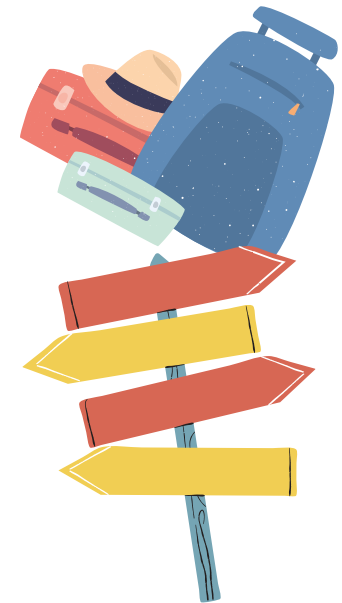


Day 4: Kawal Wildlife Sanctuary

Morning and evening safaris

Explore the sanctuary

Overnight in Kawal



Day 5: Kawal – Kinnerasani Wildlife Sanctuary

Drive to Kinnerasani Wildlife Sanctuary

Check-in at resort

Evening safari

Overnight in Kinnerasani

Day 6: Kinnerasani Wildlife Sanctuary

Morning and evening safaris

Explore the sanctuary

Overnight in Kinnerasani



Day 7: Kinnerasani – Hyderabad (Departure)

Drive back to Hyderabad

Departure from Hyderabad



Tour Exclusions:

1. Airfare and Train Tickets:

- Cost of flights or train tickets to and from the starting and ending points of the tour.

2. Meals Not Specified:

- Meals other than those specified in the itinerary.
- Snacks, drinks, and beverages outside of the provided meal plan.

3. Seasonal Activity Restrictions:

- Activities not available during the specific season of travel, such as:
 - **Monsoon Season:** River rafting, trekking in certain regions, or other outdoor activities may be restricted due to weather conditions.
 - **Winter Season:** Access to certain high-altitude locations or activities like boat rides in frozen lakes.
 - **Summer Season:** Desert safaris or activities in extremely hot regions may be limited.

4. Entrance Fees and Optional Activities:

- Entrance fees to monuments, museums, and other attractions unless specifically mentioned.
- Charges for optional activities not included in the main itinerary.

5. Personal Expenses:

- Personal expenses such as laundry, telephone calls, and tips.
- Purchases of souvenirs, gifts, and personal shopping.

6. Travel Insurance:

- Travel insurance coverage for any unforeseen circumstances, medical emergencies, or trip cancellations.

7. Visa and Passport Fees:

- Costs related to obtaining visas, passports, or other travel documentation.

8. Transportation Outside the Itinerary:

- Any transportation costs not explicitly mentioned in the itinerary, such as additional taxis, rental cars, or public transport.

9. Medical and Health Expenses:

- Any medical or health-related expenses incurred during the trip.

10. Accommodation Before and After the Tour:

- Accommodation costs before the official start date of the tour and after the end date.

11. Special Permits:

- Costs associated with obtaining special permits for restricted areas or activities.

12. Gratuities:

- Tips for guides, drivers, hotel staff, and other service providers.

