

# MADHYA PRADESH SPIRITUAL TOUR



**7 DAYS/  
6 NIGHTS**



## Our Travel Package

Ujjain-Omkareshwar-Maheshwar-Mandu-  
Bhopal-Bhimbetka-Bhopal

**NEGOTIABLE !!!**

### Couple

- Pickup & Drop
- 3 Star Hotels
- Braekfast & Dinner
- Slightseeing

Rs.75,000/-

### Family of 4

- Pickup & Drop
- 3 Star Hotels
- Braekfast & Dinner
- Slightseeing

Rs.1,35,000/-

### Family of 6

- Pickup & Drop
- 3 Star Hotels
- Braekfast & Dinner
- Slightseeing

Rs.1,85,000/-

### Group of 27

- Pickup & Drop
- 3 Star Hotels
- Deshpande's Kitchen
- Slightseeing
- Tour Manager

On Call



**CLICK HERE**



### **Day 1: Arrival in Ujjain**

Check-in at hotel

Visit Mahakaleshwar Temple, Harsiddhi Temple, Ram Ghat

Attend evening Aarti at Mahakaleshwar Temple

Overnight in Ujjain



### **Day 2: Ujjain – Omkareshwar**

Drive to Omkareshwar

Visit Omkareshwar Temple, Mamleshwar Temple, Omkareshwar Jyotirlinga

Boat ride on Narmada River

Overnight in Omkareshwar



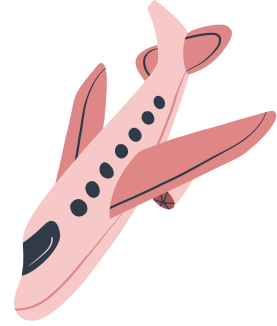
### **Day 3: Omkareshwar – Maheshwar**

Drive to Maheshwar

Visit Ahilya Fort, Rajwada, Maheshwar Ghat

Explore local handloom weavers

Overnight in Maheshwar



### **Day 4: Maheshwar – Mandu**

Drive to Mandu

Visit Jahaz Mahal, Hindola Mahal, Rani Roopmati Pavilion

Explore Baz Bahadur's Palace

Overnight in Mandu



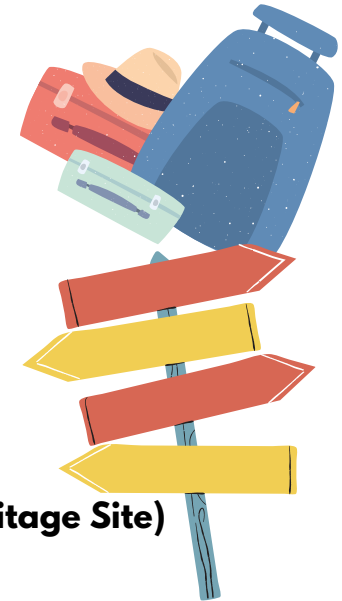
### **Day 5: Mandu – Sanchi – Bhopal**

Drive to Sanchi

Visit Sanchi Stupa (UNESCO World Heritage Site)

Drive to Bhopal

Overnight in Bhopal



### **Day 6: Bhopal – Bhojpur – Bhimbetka – Bhopal**

Drive to Bhojpur, visit Bhojeshwar Temple

Drive to Bhimbetka, visit Bhimbetka Rock Shelters (UNESCO World Heritage Site)

Return to Bhopal, overnight stay

### **Day 7: Bhopal (Departure)**

Visit Upper Lake, Van Vihar National Park

Departure from Bhopal





# Tour Exclusions:

## 1. Airfare and Train Tickets:

- Cost of flights or train tickets to and from the starting and ending points of the tour.

## 2. Meals Not Specified:

- Meals other than those specified in the itinerary.
- Snacks, drinks, and beverages outside of the provided meal plan.

## 3. Seasonal Activity Restrictions:

- Activities not available during the specific season of travel, such as:
  - **Monsoon Season:** River rafting, trekking in certain regions, or other outdoor activities may be restricted due to weather conditions.
  - **Winter Season:** Access to certain high-altitude locations or activities like boat rides in frozen lakes.
  - **Summer Season:** Desert safaris or activities in extremely hot regions may be limited.

## 4. Entrance Fees and Optional Activities:

- Entrance fees to monuments, museums, and other attractions unless specifically mentioned.
- Charges for optional activities not included in the main itinerary.

## 5. Personal Expenses:

- Personal expenses such as laundry, telephone calls, and tips.
- Purchases of souvenirs, gifts, and personal shopping.

## 6. Travel Insurance:

- Travel insurance coverage for any unforeseen circumstances, medical emergencies, or trip cancellations.

## 7. Visa and Passport Fees:

- Costs related to obtaining visas, passports, or other travel documentation.

## 8. Transportation Outside the Itinerary:

- Any transportation costs not explicitly mentioned in the itinerary, such as additional taxis, rental cars, or public transport.

## 9. Medical and Health Expenses:

- Any medical or health-related expenses incurred during the trip.

## 10. Accommodation Before and After the Tour:

- Accommodation costs before the official start date of the tour and after the end date.

## 11. Special Permits:

- Costs associated with obtaining special permits for restricted areas or activities.

## 12. Gratuities:

- Tips for guides, drivers, hotel staff, and other service providers.

