

MADHYA PRADESH WILDLIFE TOUR



**6 DAYS/
5 NIGHTS**



Our Travel Package

Jabalpur-Kanha National Park-Bandhavgarh
National Park-Khajuraho

NEGOTIABLE !!!

Couple

- Pickup & Drop
- 3 Star Hotels
- Braekfast & Dinner
- Slightseeing

Rs.70,000/-

Family of 4

- Pickup & Drop
- 3 Star Hotels
- Braekfast & Dinner
- Slightseeing

Rs.1,25,000/-

Family of 6

- Pickup & Drop
- 3 Star Hotels
- Braekfast & Dinner
- Slightseeing

Rs.1,65,000/-

Group of 27

- Pickup & Drop
- 3 Star Hotels
- Deshpande's Kitchen
- Slightseeing
- Tour Manager

On Call



CLICK HERE



Day 1: Arrival in Jabalpur

Check-in at hotel

Visit Marble Rocks at Bhedaghat, Dhuandhar Falls

Overnight in Jabalpur



Day 2: Jabalpur – Kanha National Park

Drive to Kanha National Park

Check-in at resort

Evening safari

Overnight in Kanha

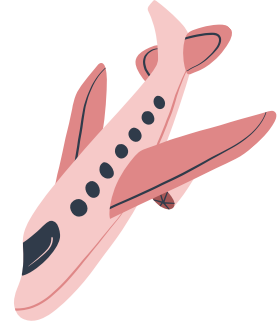


Day 3: Kanha National Park

Morning and evening safari

Visit Kanha Museum

Overnight in Kanha



Day 4: Kanha National Park – Bandhavgarh National Park

Drive to Bandhavgarh National Park

Check-in at resort

Evening safari

Overnight in Bandhavgarh

Day 5: Bandhavgarh National Park

Morning and evening safari

Visit Bandhavgarh Fort

Overnight in Bandhavgarh

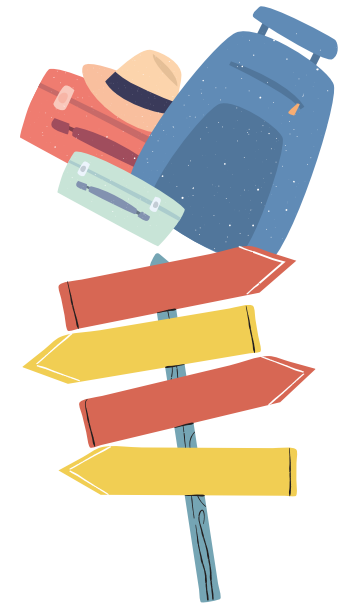


Day 6: Bandhavgarh – Khajuraho (Departure)

Drive to Khajuraho

Visit Western Group of Temples (UNESCO World Heritage Site)

Departure from Khajuraho





Tour Exclusions:

1. Airfare and Train Tickets:

- Cost of flights or train tickets to and from the starting and ending points of the tour.

2. Meals Not Specified:

- Meals other than those specified in the itinerary.
- Snacks, drinks, and beverages outside of the provided meal plan.

3. Seasonal Activity Restrictions:

- Activities not available during the specific season of travel, such as:
 - **Monsoon Season:** River rafting, trekking in certain regions, or other outdoor activities may be restricted due to weather conditions.
 - **Winter Season:** Access to certain high-altitude locations or activities like boat rides in frozen lakes.
 - **Summer Season:** Desert safaris or activities in extremely hot regions may be limited.

4. Entrance Fees and Optional Activities:

- Entrance fees to monuments, museums, and other attractions unless specifically mentioned.
- Charges for optional activities not included in the main itinerary.

5. Personal Expenses:

- Personal expenses such as laundry, telephone calls, and tips.
- Purchases of souvenirs, gifts, and personal shopping.

6. Travel Insurance:

- Travel insurance coverage for any unforeseen circumstances, medical emergencies, or trip cancellations.

7. Visa and Passport Fees:

- Costs related to obtaining visas, passports, or other travel documentation.

8. Transportation Outside the Itinerary:

- Any transportation costs not explicitly mentioned in the itinerary, such as additional taxis, rental cars, or public transport.

9. Medical and Health Expenses:

- Any medical or health-related expenses incurred during the trip.

10. Accommodation Before and After the Tour:

- Accommodation costs before the official start date of the tour and after the end date.

11. Special Permits:

- Costs associated with obtaining special permits for restricted areas or activities.

12. Gratuities:

- Tips for guides, drivers, hotel staff, and other service providers.

