

UTTARAKHAND HILL STATIONS TOUR



**6 DAYS/
5 NIGHTS**



Our Travel Package

Dehradun- Mussoorie – Ranikhet- Almora-
Nainital

NEGOTIABLE !!!

Couple

- Pickup & Drop
- 3 Star Hotels
- Braekfast & Dinner
- Slightseeing

Rs.75,000/-

Family of 4

- Pickup & Drop
- 3 Star Hotels
- Braekfast & Dinner
- Slightseeing

Rs.1,00,000/-

Family of 6

- Pickup & Drop
- 3 Star Hotels
- Braekfast & Dinner
- Slightseeing

Rs.1,60,000/-

Group of 27

- Pickup & Drop
- 3 Star Hotels
- Deshpande's Kitchen
- Slightseeing
- Tour Manager

On Call



CLICK HERE



Day 1: Arrival in Dehradun – Transfer to Mussoorie

Check-in at hotel

Visit Kempty Falls, Gun Hill

Overnight in Mussoorie



Day 2: Mussoorie

Visit Lal Tibba, Camel's Back Road, Company Garden

Overnight in Mussoorie

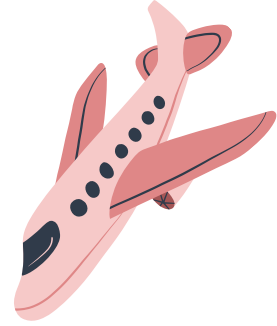


Day 3: Mussoorie – Ranikhet

Drive to Ranikhet

Visit Chaubatia Gardens, Jhula Devi Temple

Overnight in Ranikhet



Day 4: Ranikhet – Almora

Drive to Almora

Visit Kasar Devi Temple, Bright End Corner

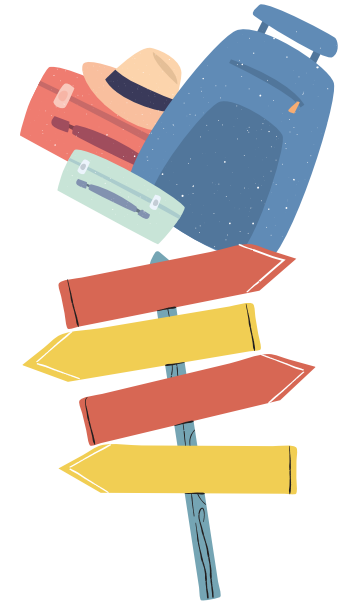
Overnight in Almora

Day 5: Almora – Nainital

Drive to Nainital

Visit Naini Lake, Naina Devi Temple, Mall Road

Overnight in Nainital



Day 6: Nainital – Departure

Morning visit to Snow View Point, Nainital Zoo

Check-out from hotel

Departure from Nainital



Tour Exclusions:



1. Airfare and Train Tickets:

- Cost of flights or train tickets to and from the starting and ending points of the tour.

2. Meals Not Specified:

- Meals other than those specified in the itinerary.
- Snacks, drinks, and beverages outside of the provided meal plan.

3. Seasonal Activity Restrictions:

- Activities not available during the specific season of travel, such as:
 - Monsoon Season: River rafting, trekking in certain regions, or other outdoor activities may be restricted due to weather conditions.
 - Winter Season: Access to certain high-altitude locations or activities like boat rides in frozen lakes.
 - Summer Season: Desert safaris or activities in extremely hot regions may be limited.

4. Entrance Fees and Optional Activities:

- Entrance fees to monuments, museums, and other attractions unless specifically mentioned.
- Charges for optional activities not included in the main itinerary.

5. Personal Expenses:

- Personal expenses such as laundry, telephone calls, and tips.
- Purchases of souvenirs, gifts, and personal shopping.

6. Travel Insurance:

- Travel insurance coverage for any unforeseen circumstances, medical emergencies, or trip cancellations.

7. Visa and Passport Fees:

- Costs related to obtaining visas, passports, or other travel documentation.

8. Transportation Outside the Itinerary:

- Any transportation costs not explicitly mentioned in the itinerary, such as additional taxis, rental cars, or public transport.

9. Medical and Health Expenses:

- Any medical or health-related expenses incurred during the trip.

10. Accommodation Before and After the Tour:

- Accommodation costs before the official start date of the tour and after the end date.

11. Special Permits:

- Costs associated with obtaining special permits for restricted areas or activities.

12. Gratuities:

- Tips for guides, drivers, hotel staff, and other service providers.

