

CLASSIC MADHYA PRADESH HERITAGE TOUR



**7 DAYS/
6 NIGHTS**



Our Travel Package

Bhopal-Bhimbetka-Bhopal-Ujjain-Mandu-
Maheshwar-Omkareshwar-Indore

NEGOTIABLE !!!

Couple

- Pickup & Drop
- 3 Star Hotels
- Braekfast & Dinner
- Slightseeing

Rs.90,000/-

Family of 4

- Pickup & Drop
- 3 Star Hotels
- Braekfast & Dinner
- Slightseeing

Rs.1,60,000/-

Family of 6

- Pickup & Drop
- 3 Star Hotels
- Braekfast & Dinner
- Slightseeing

Rs.2,10,000/-

Group of 27

- Pickup & Drop
- 3 Star Hotels
- Deshpande's Kitchen
- Slightseeing
- Tour Manager

On Call



WhatsApp

CLICK HERE



Day 1: Arrival in Bhopal

Check-in at hotel

Visit Sanchi Stupa (UNESCO World Heritage Site)

Explore Upper Lake and Van Vihar National Park

Overnight in Bhopal



Day 2: Bhopal – Bhimbetka – Bhojpur – Bhopal

Drive to Bhimbetka (UNESCO World Heritage Site)

Visit Bhimbetka Rock Shelters

Drive to Bhojpur, visit Bhojeshwar Temple

Return to Bhopal, overnight stay



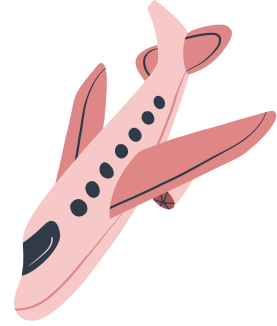
Day 3: Bhopal – Ujjain

Drive to Ujjain

Visit Mahakaleshwar Temple, Kal Bhairav Temple, Ram Ghat

Attend evening Aarti at Mahakaleshwar Temple

Overnight in Ujjain



Day 4: Ujjain – Mandu

Drive to Mandu

Visit Jahaz Mahal, Hindola Mahal, Rani Roopmati Pavilion

Explore Baz Bahadur's Palace

Overnight in Mandu



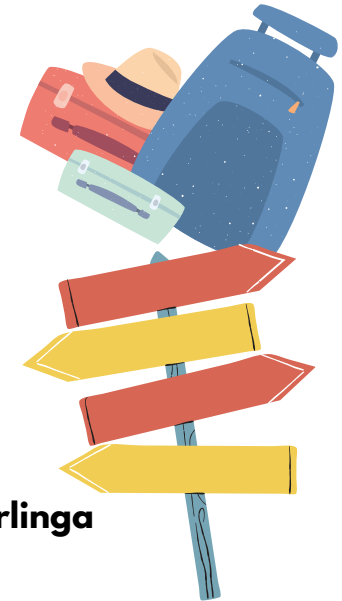
Day 5: Mandu – Maheshwar

Drive to Maheshwar

Visit Ahilya Fort, Rajwada, Maheshwar Ghat

Explore local handloom weavers

Overnight in Maheshwar



Day 6: Maheshwar – Omkareshwar

Drive to Omkareshwar

Visit Omkareshwar Temple, Mamleshwar Temple, Omkareshwar Jyotirlinga

Boat ride on Narmada River

Overnight in Omkareshwar

Day 7: Omkareshwar – Indore (Departure)

Drive to Indore

Visit Rajwada Palace, Lal Bagh Palace

Departure from Indore





Tour Exclusions:

1. Airfare and Train Tickets:

- Cost of flights or train tickets to and from the starting and ending points of the tour.

2. Meals Not Specified:

- Meals other than those specified in the itinerary.
- Snacks, drinks, and beverages outside of the provided meal plan.

3. Seasonal Activity Restrictions:

- Activities not available during the specific season of travel, such as:
 - **Monsoon Season:** River rafting, trekking in certain regions, or other outdoor activities may be restricted due to weather conditions.
 - **Winter Season:** Access to certain high-altitude locations or activities like boat rides in frozen lakes.
 - **Summer Season:** Desert safaris or activities in extremely hot regions may be limited.

4. Entrance Fees and Optional Activities:

- Entrance fees to monuments, museums, and other attractions unless specifically mentioned.
- Charges for optional activities not included in the main itinerary.

5. Personal Expenses:

- Personal expenses such as laundry, telephone calls, and tips.
- Purchases of souvenirs, gifts, and personal shopping.

6. Travel Insurance:

- Travel insurance coverage for any unforeseen circumstances, medical emergencies, or trip cancellations.

7. Visa and Passport Fees:

- Costs related to obtaining visas, passports, or other travel documentation.

8. Transportation Outside the Itinerary:

- Any transportation costs not explicitly mentioned in the itinerary, such as additional taxis, rental cars, or public transport.

9. Medical and Health Expenses:

- Any medical or health-related expenses incurred during the trip.

10. Accommodation Before and After the Tour:

- Accommodation costs before the official start date of the tour and after the end date.

11. Special Permits:

- Costs associated with obtaining special permits for restricted areas or activities.

12. Gratuities:

- Tips for guides, drivers, hotel staff, and other service providers.

