

MADHYA PRADESH CULTURAL & TRIBAL TOUR



**8 DAYS/
7 NIGHTS**



Our Travel Package

Bhopal-Bhimbetka-Bhojpur-Bhopal-Chanderi-Orchha-Khajuraho-Panna National Park-Khajuraho

NEGOTIABLE !!!

Couple

- Pickup & Drop
- 3 Star Hotels
- Braekfast & Dinner
- Slightseeing

Rs.90,000/-

Family of 4

- Pickup & Drop
- 3 Star Hotels
- Braekfast & Dinner
- Slightseeing

Rs.1,60,000/-

Family of 6

- Pickup & Drop
- 3 Star Hotels
- Braekfast & Dinner
- Slightseeing

Rs.2,10,000/-

Group of 27

- Pickup & Drop
- 3 Star Hotels
- Deshpande's Kitchen
- Slightseeing
- Tour Manager

On Call



CLICK HERE



Day 1: Arrival in Bhopal

Check-in at hotel

Visit Tribal Museum, State Museum

Overnight in Bhopal

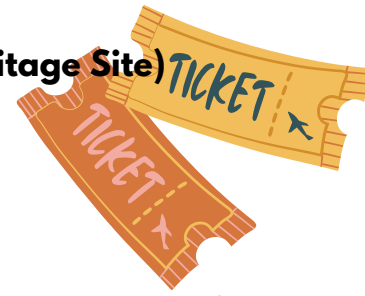


Day 2: Bhopal – Bhimbetka – Bhojpur – Bhopal

Drive to Bhimbetka, visit Bhimbetka Rock Shelters (UNESCO World Heritage Site)

Drive to Bhojpur, visit Bhojeshwar Temple

Return to Bhopal, overnight stay



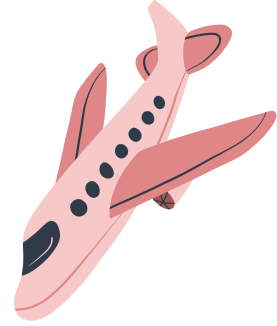
Day 3: Bhopal – Chanderi

Drive to Chanderi

Visit Chanderi Fort, Koshak Mahal, Jain Temples

Explore local weaving community

Overnight in Chanderi



Day 4: Chanderi – Orchha

Drive to Orchha

Visit Orchha Fort, Jehangir Mahal, Chaturbhuj Temple

Overnight in Orchha

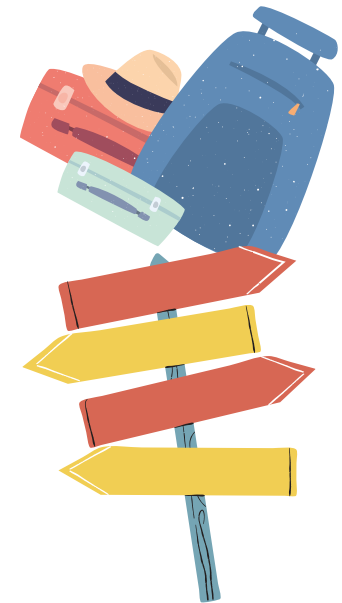
Day 5: Orchha – Khajuraho

Drive to Khajuraho

Visit Western Group of Temples (UNESCO World Heritage Site)

Attend evening light and sound show

Overnight in Khajuraho



Day 6: Khajuraho – Panna National Park

Drive to Panna National Park

Check-in at resort

Evening safari

Overnight in Panna

Day 7: Panna National Park

Morning safari

Visit Pandav Falls, Ken Gharial Sanctuary

Overnight in Panna

Day 8: Panna – Khajuraho (Departure)

Drive back to Khajuraho

Departure from Khajuraho



Tour Exclusions:



1. Airfare and Train Tickets:

- Cost of flights or train tickets to and from the starting and ending points of the tour.

2. Meals Not Specified:

- Meals other than those specified in the itinerary.
- Snacks, drinks, and beverages outside of the provided meal plan.

3. Seasonal Activity Restrictions:

- Activities not available during the specific season of travel, such as:
 - Monsoon Season: River rafting, trekking in certain regions, or other outdoor activities may be restricted due to weather conditions.
 - Winter Season: Access to certain high-altitude locations or activities like boat rides in frozen lakes.
 - Summer Season: Desert safaris or activities in extremely hot regions may be limited.

4. Entrance Fees and Optional Activities:

- Entrance fees to monuments, museums, and other attractions unless specifically mentioned.
- Charges for optional activities not included in the main itinerary.

5. Personal Expenses:

- Personal expenses such as laundry, telephone calls, and tips.
- Purchases of souvenirs, gifts, and personal shopping.

6. Travel Insurance:

- Travel insurance coverage for any unforeseen circumstances, medical emergencies, or trip cancellations.

7. Visa and Passport Fees:

- Costs related to obtaining visas, passports, or other travel documentation.

8. Transportation Outside the Itinerary:

- Any transportation costs not explicitly mentioned in the itinerary, such as additional taxis, rental cars, or public transport.

9. Medical and Health Expenses:

- Any medical or health-related expenses incurred during the trip.

10. Accommodation Before and After the Tour:

- Accommodation costs before the official start date of the tour and after the end date.

11. Special Permits:

- Costs associated with obtaining special permits for restricted areas or activities.

12. Gratuities:

- Tips for guides, drivers, hotel staff, and other service providers.

