

HIMACHAL ADVENTURE TOUR



**7 DAYS/
6 NIGHTS**

Our Travel Package

Manali-Solang valley- Manali – Rohtang
Pass-Kasol –Tosh Trek -Dharamshala – Triund
Trek-Dharamshala



NEGOTIABLE !!!

Couple

- Pickup & Drop
- 3 Star Hotels
- Braekfast & Dinner
- Slightseeing

Rs.85,000/-

Family of 4

- Pickup & Drop
- 3 Star Hotels
- Braekfast & Dinner
- Slightseeing

Rs.1,10,000/-

Family of 6

- Pickup & Drop
- 3 Star Hotels
- Braekfast & Dinner
- Slightseeing

Rs.1,70,000/-

Group of 27

- Pickup & Drop
- 3 Star Hotels
- Deshpande's Kitchen
- Slightseeing
- Tour Manager

On Call



WhatsApp

CLICK HERE



Day 1:* Arrival in Manali

Check-in at hotel

Visit Hadimba Temple, Manu Temple

Overnight in Manali



Day 2:* Manali – Solang Valley

Excursion to Solang Valley

Paragliding, Zorbing, Ropeway ride

Return to Manali, overnight stay

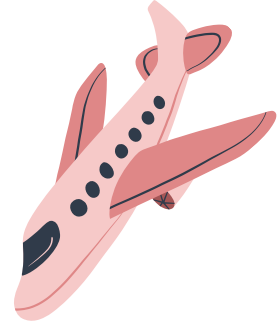


Day 3: Manali – Rohtang Pass

Excursion to Rohtang Pass (subject to weather conditions)

Snow activities, scenic views

Return to Manali, overnight stay



Day 4:* Manali – Kasol

Drive to Kasol

Check-in at hotel

Explore Kasol, visit Manikaran Sahib

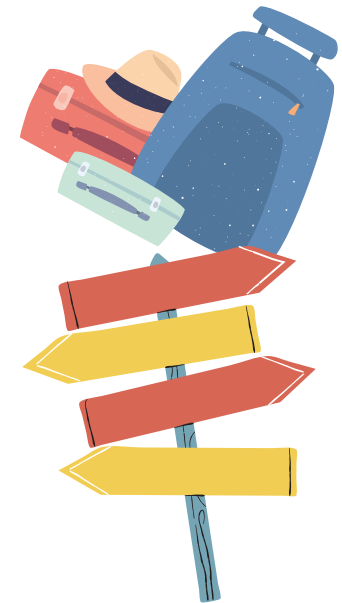
Overnight in Kasol

Day 5:* Kasol – Tosh Trek

Trek to Tosh Village

Explore the village, enjoy the scenic beauty

Return to Kasol, overnight stay



Day 6: Kasol – Dharamshala

Drive to Dharamshala

Check-in at hotel

Visit Dalai Lama Temple, Bhagsu Waterfall

Overnight in Dharamshala

Day 7: Dharamshala – Triund Trek

Trek to Triund

Enjoy the panoramic views of the Dhauladhar range

Return to Dharamshala, departure



Tour Exclusions:



1. Airfare and Train Tickets:

- Cost of flights or train tickets to and from the starting and ending points of the tour.

2. Meals Not Specified:

- Meals other than those specified in the itinerary.
- Snacks, drinks, and beverages outside of the provided meal plan.

3. Seasonal Activity Restrictions:

- Activities not available during the specific season of travel, such as:
 - **Monsoon Season:** River rafting, trekking in certain regions, or other outdoor activities may be restricted due to weather conditions.
 - **Winter Season:** Access to certain high-altitude locations or activities like boat rides in frozen lakes.
 - **Summer Season:** Desert safaris or activities in extremely hot regions may be limited.

4. Entrance Fees and Optional Activities:

- Entrance fees to monuments, museums, and other attractions unless specifically mentioned.
- Charges for optional activities not included in the main itinerary.

5. Personal Expenses:

- Personal expenses such as laundry, telephone calls, and tips.
- Purchases of souvenirs, gifts, and personal shopping.

6. Travel Insurance:

- Travel insurance coverage for any unforeseen circumstances, medical emergencies, or trip cancellations.

7. Visa and Passport Fees:

- Costs related to obtaining visas, passports, or other travel documentation.

8. Transportation Outside the Itinerary:

- Any transportation costs not explicitly mentioned in the itinerary, such as additional taxis, rental cars, or public transport.

9. Medical and Health Expenses:

- Any medical or health-related expenses incurred during the trip.

10. Accommodation Before and After the Tour:

- Accommodation costs before the official start date of the tour and after the end date.

11. Special Permits:

- Costs associated with obtaining special permits for restricted areas or activities.

12. Gratuities:

- Tips for guides, drivers, hotel staff, and other service providers.

