

# CLASSIC UTTARAKHAND TOUR



**7 DAYS/  
6 NIGHTS**



## Our Travel Package

Dehradun - Mussoorie - Rishikesh- Haridwar -  
Jim Corbett National Park-Nainital

**NEGOTIABLE !!!**

### Couple

- Pickup & Drop
- 3 Star Hotels
- Braekfast & Dinner
- Slightseeing

Rs.85,000/-

### Family of 4

- Pickup & Drop
- 3 Star Hotels
- Braekfast & Dinner
- Slightseeing

Rs.1,10,000/-

### Family of 6

- Pickup & Drop
- 3 Star Hotels
- Braekfast & Dinner
- Slightseeing

Rs.1,70,000/-

### Group of 27

- Pickup & Drop
- 3 Star Hotels
- Deshpande's Kitchen
- Slightseeing
- Tour Manager

On Call



**CLICK HERE**



### **Day 1: Arrival in Dehradun – Transfer to Mussoorie**

Check-in at hotel

Visit Kempty Falls, Gun Hill

Evening stroll on Mall Road

Overnight in Mussoorie



### **Day 2: Mussoorie**

Visit Lal Tibba, Camel's Back Road, Company Garden

Explore Mussoorie Lake

Overnight in Mussoorie



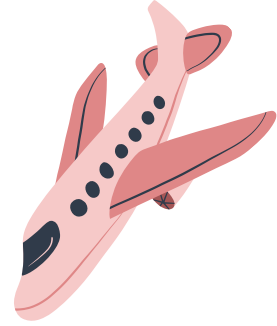
### **Day 3: Mussoorie – Rishikesh**

Drive to Rishikesh

Visit Laxman Jhula, Ram Jhula, Triveni Ghat

Evening Ganga Aarti at Parmarth Niketan

Overnight in Rishikesh



### **Day 4: Rishikesh – Haridwar**

Drive to Haridwar

Visit Har Ki Pauri, Mansa Devi Temple, Chandi Devi Temple

Evening Ganga Aarti at Har Ki Pauri

Overnight in Haridwar

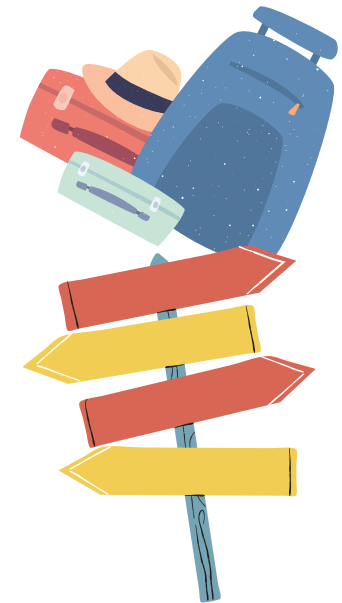
### **Day 5: Haridwar – Jim Corbett National Park**

Drive to Jim Corbett

Check-in at resort

Evening nature walk

Overnight in Jim Corbett



### **Day 6: Jim Corbett National Park**

Early morning jungle safari

Visit Corbett Museum, Corbett Falls

Evening safari or leisure time

Overnight in Jim Corbett

### **Day 7: Jim Corbett – Nainital – Departure**

Drive to Nainital

Visit Naini Lake, Naina Devi Temple, Mall Road

Departure from Nainital





# Tour Exclusions:

## 1. Airfare and Train Tickets:

- Cost of flights or train tickets to and from the starting and ending points of the tour.

## 2. Meals Not Specified:

- Meals other than those specified in the itinerary.
- Snacks, drinks, and beverages outside of the provided meal plan.

## 3. Seasonal Activity Restrictions:

- Activities not available during the specific season of travel, such as:
  - **Monsoon Season:** River rafting, trekking in certain regions, or other outdoor activities may be restricted due to weather conditions.
  - **Winter Season:** Access to certain high-altitude locations or activities like boat rides in frozen lakes.
  - **Summer Season:** Desert safaris or activities in extremely hot regions may be limited.

## 4. Entrance Fees and Optional Activities:

- Entrance fees to monuments, museums, and other attractions unless specifically mentioned.
- Charges for optional activities not included in the main itinerary.

## 5. Personal Expenses:

- Personal expenses such as laundry, telephone calls, and tips.
- Purchases of souvenirs, gifts, and personal shopping.

## 6. Travel Insurance:

- Travel insurance coverage for any unforeseen circumstances, medical emergencies, or trip cancellations.

## 7. Visa and Passport Fees:

- Costs related to obtaining visas, passports, or other travel documentation.

## 8. Transportation Outside the Itinerary:

- Any transportation costs not explicitly mentioned in the itinerary, such as additional taxis, rental cars, or public transport.

## 9. Medical and Health Expenses:

- Any medical or health-related expenses incurred during the trip.

## 10. Accommodation Before and After the Tour:

- Accommodation costs before the official start date of the tour and after the end date.

## 11. Special Permits:

- Costs associated with obtaining special permits for restricted areas or activities.

## 12. Gratuities:

- Tips for guides, drivers, hotel staff, and other service providers.

